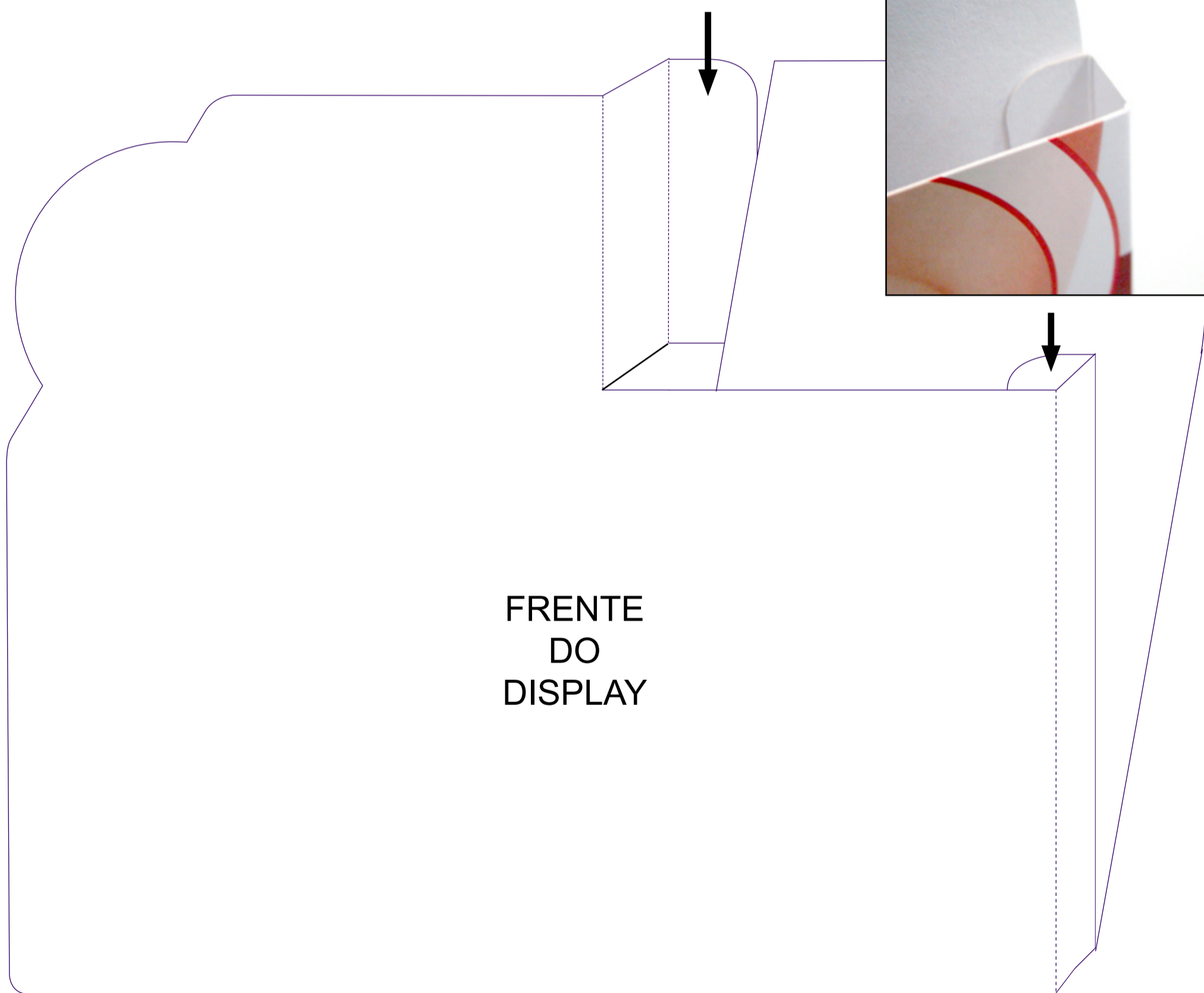
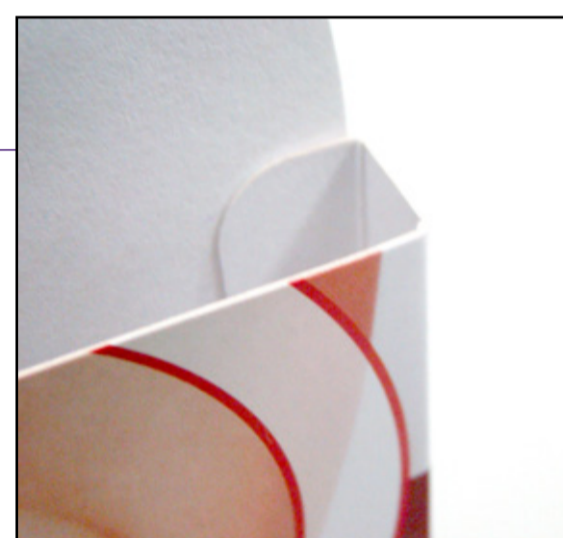


# Instruções para montagem dos displays 308, TriPollar, SmoothShapes, Sinon e Fraxel re:pair

Essa dobra  
cola por trás



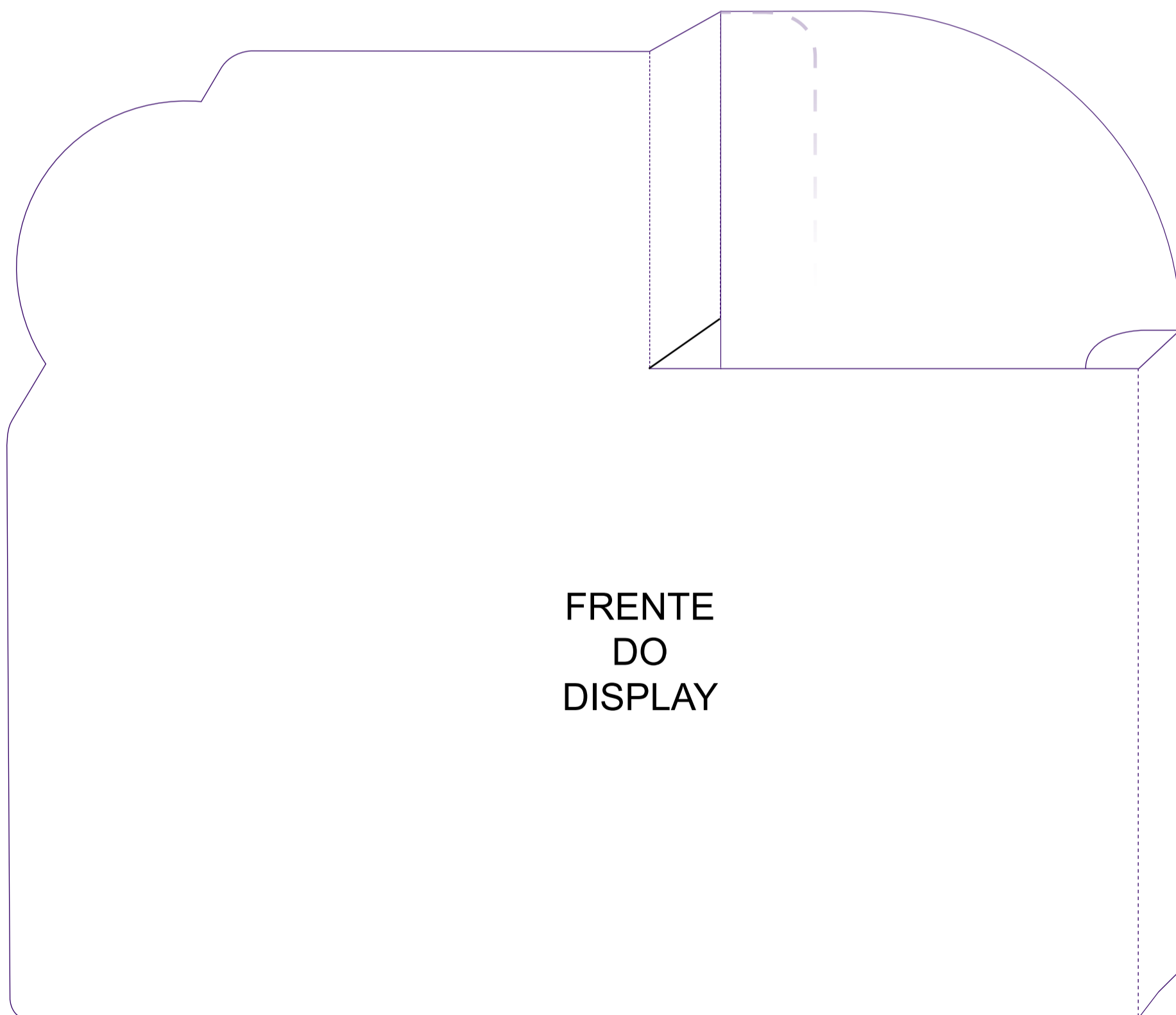
Essa dobra cola  
pela frente

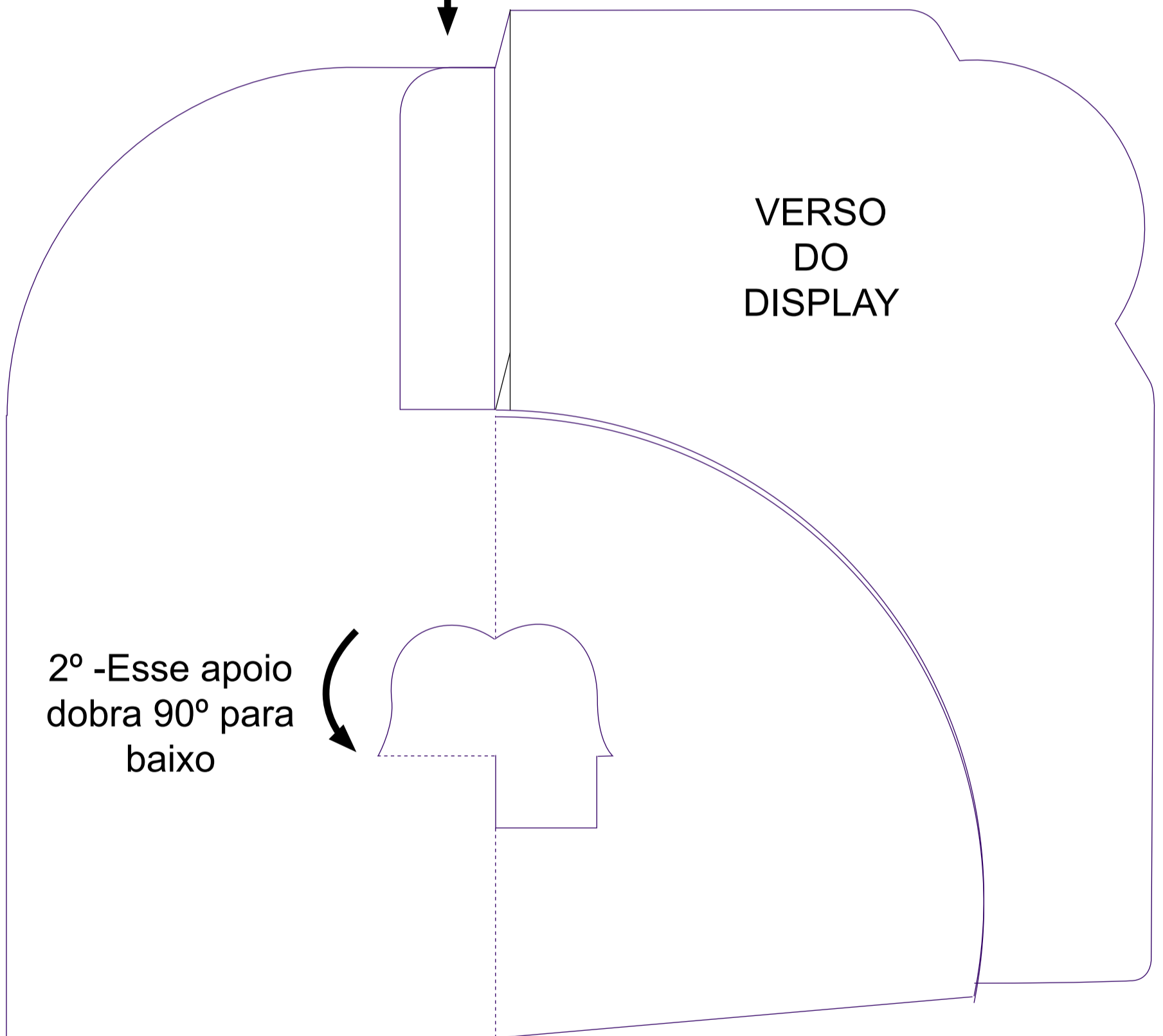
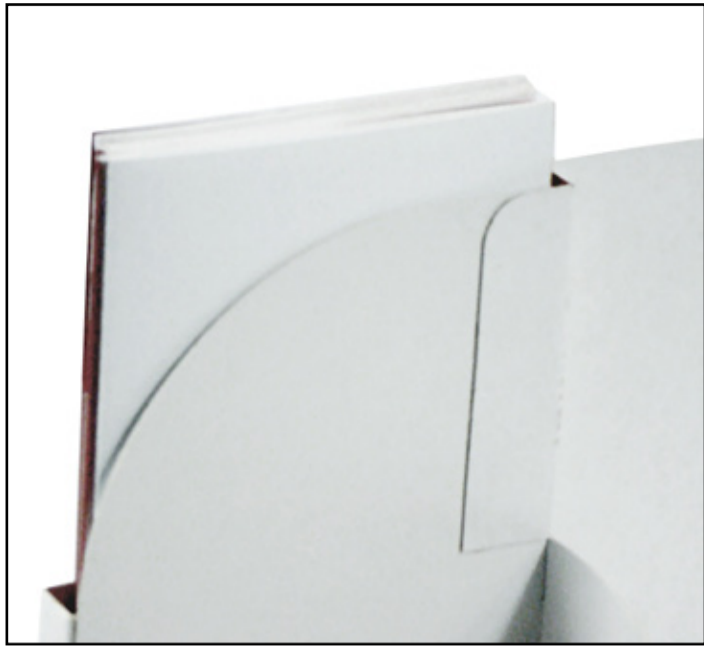


FRENTE  
DO  
DISPLAY



Display montado





2º -Esse apoio dobra 90º para baixo

1º - Esse apoio dobra 90º para trás

